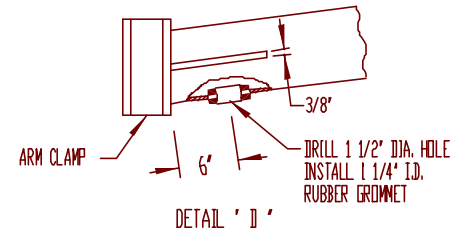


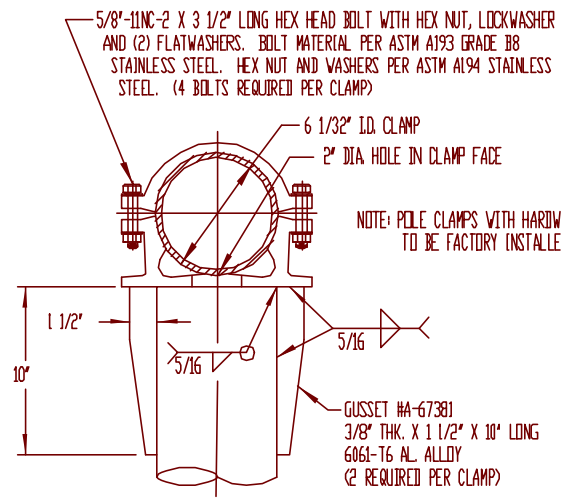
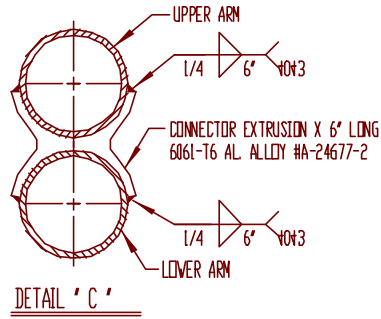
ARM, UPPER & LOWER  
5" O.D. X .125 WALL  
6063-T6 AL. ALLOY

STRUT - 3 REQUIRED  
2 3/8" O.D. X .140 WALL  
ELLIPSED TO 1 3/4" X 3"  
6063-T6 AL. ALLOY

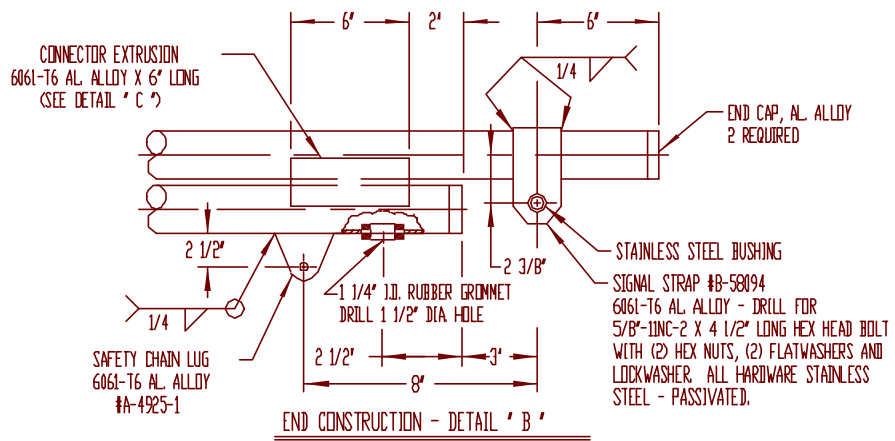
SEE DETAIL ' B '



NOTE:  
1.- USE 4043 WELD WIRE.  
2.- 6063 ASSEMBLY .375 WALL OR LESS TO BE HEAT-TREATED TO T6 TEMPER AFTER WELDING.



NOTE: POLE CLAMPS WITH HARDWARE  
TO BE FACTORY INSTALLED.



P&K

|  |                |  |                      |                   |
|--|----------------|--|----------------------|-------------------|
| P&K POLE PRODUCTS, INC.<br>84 Foundry St, Newark, N.J. |                |  |                      |                   |
| TITLE<br>25 FT. MAST ARM ASSEMBLY<br>MA2550560-10      |                |  |                      | DATE<br>06-13-78  |
| BY<br>A.J.P.   | CHKD<br>S.F.G. | DESIGNED<br>NEW JERSEY DEPT. OF TRANSPORTATION | REV. NO.<br>06-13-78 | QTY. REQ.<br>NONE |
| PART NO.<br>C-68053                                    |                |  |                      |                   |